

TIFFANY ROSE 

SPRING/
SUMMER
2016

SPECIAL OCCASION
MATERNITY WEAR





Special Occasion MATERNITY WEAR

English rose meets *tropical botanics* in bouquets of hot pink and eau de nil. Our special occasion summer collection features romantic *floral prints* harmoniously fused with classic and flattering yet supremely practical designs. From *bold and beautiful* to delicate detailing, *this season's party* dresses are awash with artistry and colour.

Race day invite or *balmy summer wedding* venue, dress your curves beautifully in Tiffany Rose. Each dress is expertly designed to smooth and flatter so you can *bloom beautifully* into your new shape.

Every *Tiffany Rose* maternity gown is *made in Britain*, from sketch to finished article, to ensure you look and feel amazing throughout the *summer party season*.



THE QUEEN'S AWARDS
FOR ENTERPRISE
2013

Designed and Made in Britain
www.tiffanyrose.com



Beautiful
BOTANICALS

Go with the flow in abstract floral prints and soft swathes of silky jersey for blissful cover.

ANASTASIA GOWN
MEADOW



*Escape
to floral
meadows*



ANASTASIA GOWN
MEADOW



ALANA MAXI
HOT TROPICS





ALANA MAXI
SNOW LEOPARD



Step out in
abstract
artistry



ALANA MAXI
AZTEC ARTISTRY

Stay summer
cool in
patterned
porcelain



ANASTASIA GOWN
PORCELAIN BLUE

OFFICE TO
evening

Flawless workwear with smart silhouettes to transport you from desk to dinner with ease.



SARA SHIFT DRESS
SNOW LEOPARD



SARA SHIFT DRESS
COLOUR PALETTE



SARA SHIFT DRESS

SNOW LEOPARD



ANNA SHIFT DRESS

AZTEC ARTISTRY



ANNA SHIFT DRESS
MIDNIGHT GARDEN



*Blossom
through stylish
summer days*

WEDDING
style

*Whether bridesmaid or guest,
be the best dressed.*



MAYA GOWN SHORT
DUSKY FLORALS



BARDOT SHIFT DRESS
GRAND JARDIN

*Romance
in hot
pink posies*





BARDOT SHIFT DRESS
PETITES FLEURS





LAURA LACE DRESS
EAU DE NIL



*Allure
in shades of
Eau de Nil*



ALESSANDRA DRESS
HOT TROPICS





EMMA SHIFT DRESS
EAU DE NIL



CHLOE LACE DRESS

DESERT ROSE



EDEN GOWN SHORT
BLUSH



*Delight
in sunset
blush lace*

*Indulge in
inky indigo blues*



ROSA DRESS
INDIGO BLUE



*Float
in heavenly
dusky florals*



MAYA GOWN SHORT
DUSKY FLORAL



KRISTIN GOWN
INDIGO BLUE





Polished & Practical

NURSING

Stylish and discreet, discover the ultimate in nursing dresses for comfort and confidence.

NAOMI NURSING DRESS
SNOW LEOPARD

DISCREET NURSING

...with Naomi

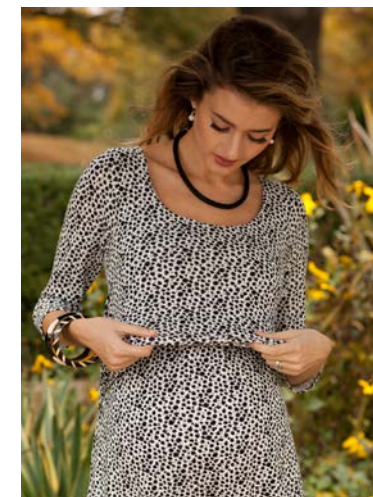


NAOMI NURSING DRESS

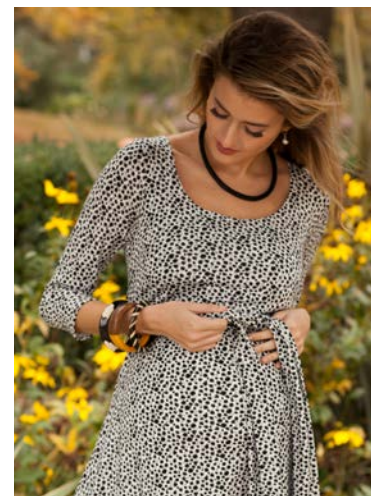
BISCAY BLUE



Step 1 - untie



Step 2 - easy access



Step 3 - re-tie

THE PERFECT CHOICE FOR NEW MUMS

Feel confident and stylish when breastfeeding with Naomi's unique wrap-around ties and hidden nursing panel.

Choose a baby-friendly nursing dress that offers easy access and the chance to feed discreetly and comfortably.

Available in:



DISCREET NURSING

...for the most glamorous occasions ever



APRIL NURSING DRESS
ARABIAN NIGHTS



Step 1 - untie



Step 2 - easy access



Step 3 - re-tie



THE *icons*

*Our famous collection of maternity wear.
Iconic glamour to help you glide effortlessly
through any event and say yes to every invitation.*

ROSA GOWN
VINTAGE BLUSH

AMELIA DRESS



ROYAL BLUE



VINTAGE ROSE

CHLOE DRESS



CORALISTA



ORCHID BLUSH

Available in:



Available in:





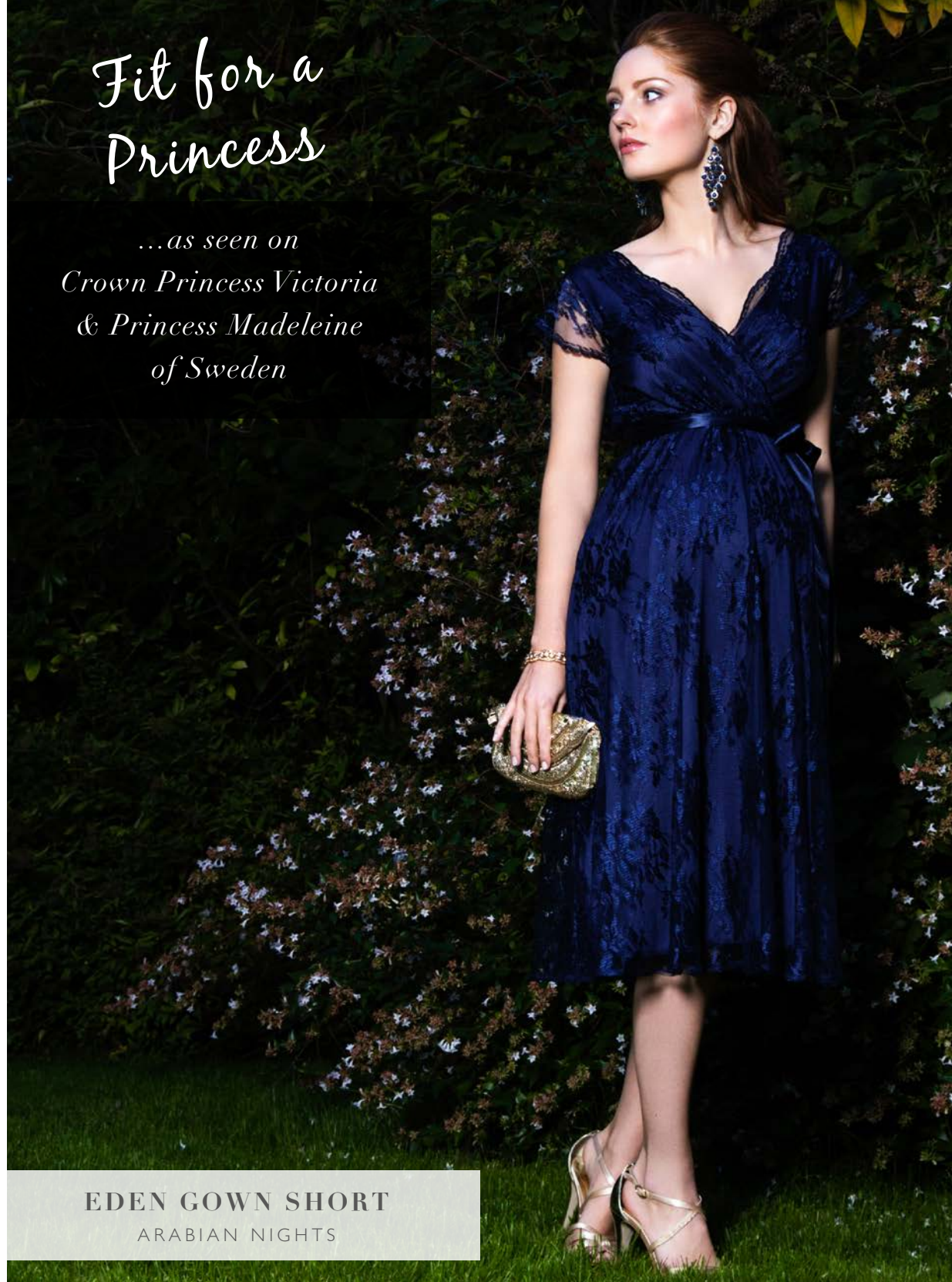
EDEN GOWN
ARABIAN NIGHTS



EDEN GOWN
CASPIAN BLUE

Fit for a Princess

*...as seen on
Crown Princess Victoria
& Princess Madeleine
of Sweden*



EDEN GOWN SHORT
ARABIAN NIGHTS



*The timeless
& elegant Rosa
fuses sleek fit
with luxury
layered lace*

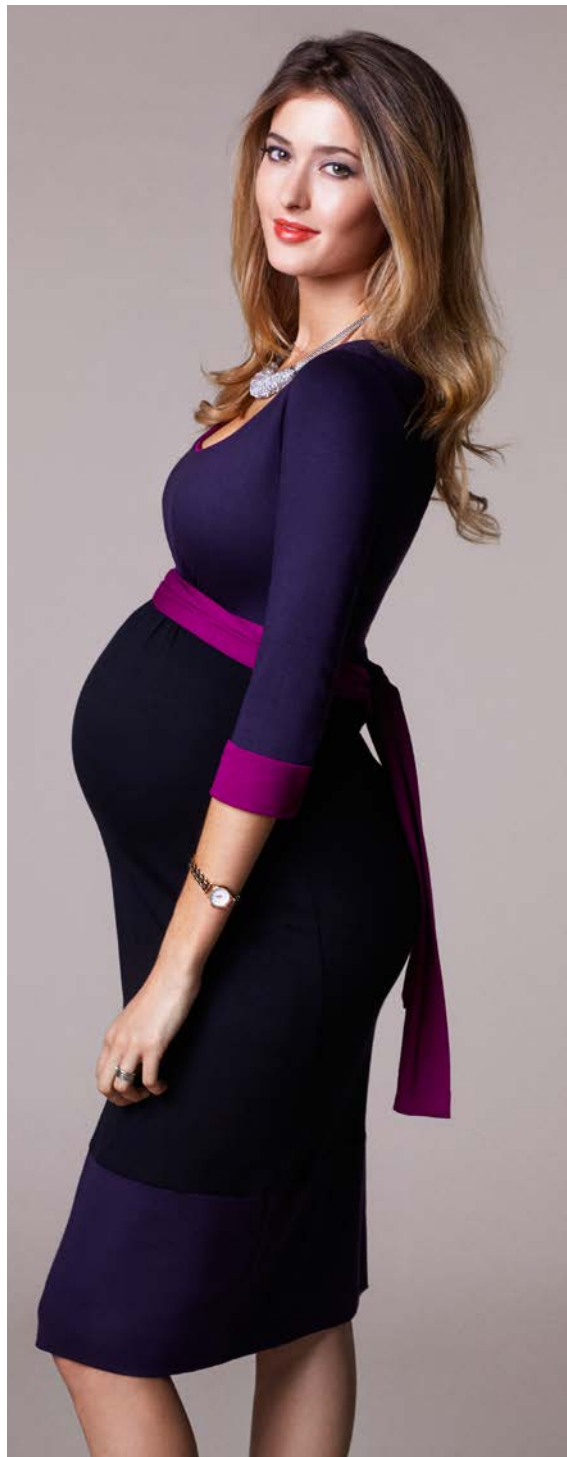
ROSA DRESS
MOCHA



ROSA DRESS
VINTAGE BLUSH



ROSA GOWN
VINTAGE BLUSH



*Celebrity
favourite
as seen on
Holly Willoughby
& Mylene Klass*



COLOUR BLOCK DRESS

PURPLE



ALESSANDRA DRESS
VINTAGE BLOOM



ALESSANDRA DRESS
MIDNIGHT GARDEN



ANASTASIA GOWN
POPPY



ALANA MAXI
MIDNIGHT GARDEN



ALANA MAXI
VINTAGE BLOOM



ALESSANDRA DRESS
POPPY



ALESSANDRA DRESS
HAWAIIAN BREEZE



ALANA MAXI
HAWAIIAN BREEZE

BRIDAL COLLECTION

SPRING / SUMMER 2016

This season is pure fairytale. Swathes of luxurious chiffon, floaty sleeved Grecian designs, demure sheer panels and romantic, shimmering lace.

Each design offers innate elegance and a sublime fit. The wedding collection ensures an unforgettable entrance with British bridal flair.

MAYA GOWN SHORT £249

IVORY



SPRING/
SUMMER
2016

www.tiffanyrose.com



sales@tiffanyrose.com
0844 448 0123 (UK)
+44 20 8397 0001 (INT)

